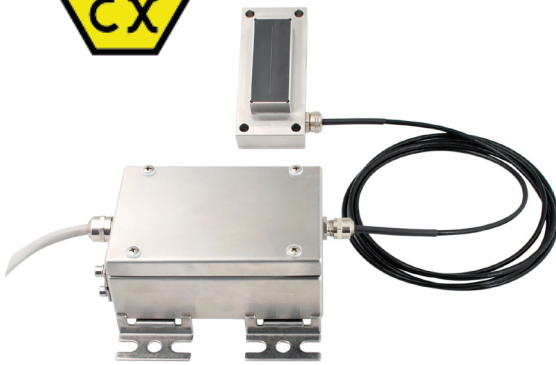
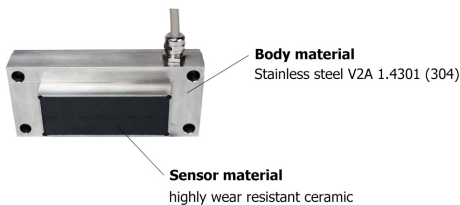
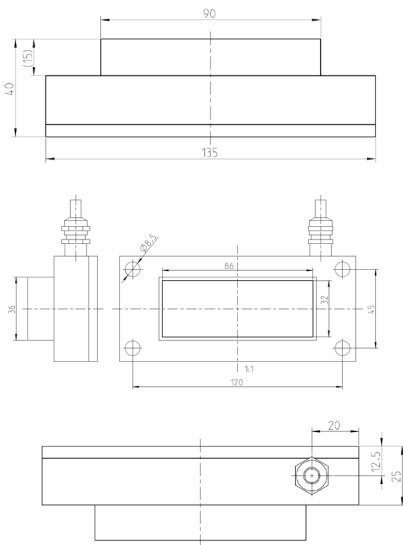


## MOISTURE PROBE SONO-EX-MIX Mini



### Drawing



### Features

- Thank to its extremely compact dimensions, this robust mixer probe is ideal for intergration in the scraper of intensive mixers with **explosion protection**
- Ideal for measurements in all conventional concretes and highly abrasive bulk solids like for example 8-32mm gravel and
- The probe head consists of strongly abrasion-resistant, hardened steel with a rectangular ceramic window and it is interchangeable
- Precise measurement also under extreme conditions
- Fast and easy to build in even in screw conveyors, mobile truck mixers and others
- In case of abrasion at probe head an automatic correction of the measuring value happens – without recalibration
- TRIME®-TDR Winner of multiple awards. Innovation awards, such as the Bauma Innovation Award 2016 and DLG Approved certification from the German Agricultural Society (DLG - 2018) it is unaffected by steam or changing particle sizes of sand and gravel

### Technical data

- Moisture range** : 0...100% H<sub>2</sub>O (depending on materials)  
**Accuracy** : 0.1 %H<sub>2</sub>O (within the calibration range)  
**Conductivity range** : 0...20 mS/cm (The conductivity range is reduced in moisture measurement ranges >50%)  
**Measuring technology** : TRIME® (Time-Domain-Reflectometry with Intelligent Micromodule Elements)  
**Measuring principle** : radar wave frequency 600MHz to 1.2 GHz  
**Temperature range** : 0...+70°C  
**Field expansion range** : approx. 50...80 mm (depending on material and moisture)  
**Signal output** : 2 x 0(4)...20 mA

Analog output 1	moisture in %
Analog output 2	conductivity or temperature

- Communication** : IMP-Bus  
**Power supply** : 12...24Vdc, 3W  
**Connector plug** : 8-pole cables  
**Body material** : stainless steel V2A 1.4301 (304)  
**Sensor material** : highly wear resistant ceramic  
**Dimension** : 135 x 60 x 40 mm  
**Protection class** : IP67  
**Certificates** : II 2 D Ex tb IIIC T75°C Db

[www.omi.co.th](http://www.omi.co.th)

**Omega Measuring Instrument Co., Ltd.**

Tel : 02-105-4676

Fax : 02-903-0080 ext. 6867

Email : [info@omi.co.th](mailto:info@omi.co.th)

Line : @omith

## AVAILABLE MATERIALS for SONO-EX-MIX Mini

The SONO-EX-MIX Mini is suited for measuring of all conventional concrete and high abrasive materials.

- **All conventional concrete**



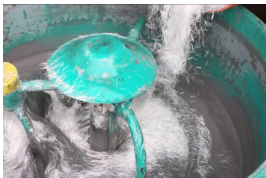
Ordinary concrete



Lightweight concrete



High density concrete



Glass reinforcement concrete



Polymer concrete



Smart concrete



Furthermore, these materials that are shown, please do not hesitate to contact us for consulting

- **Sand, gravel and minerals** (grain size up to 32mm)

For example...



Fine sand



Sand



Gravel



Quartz sand



Lime stone



Ceramic powder



Stone coal



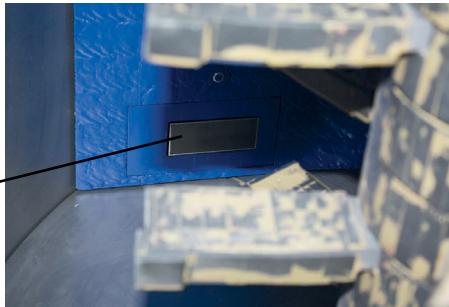
Different aggregates and others

## MOISTURE PROBE

### INSTALLATION EXAMPLE SONO-EX-MIX Mini

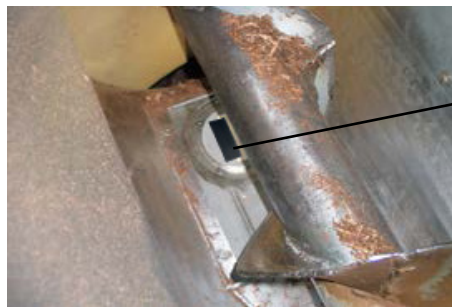
- Intensive Mixer

SONO-MIX Mini



- Screw conveyors

SONO-MIX Mini



- Mobile truck mixer

The SONO-MIX Mini can use with mobile truck mixer because it just used power supply in 12..24Vdc



*\*\*note ; The moisture probe, SONO-EX-MIX Mini. It is able to install various position. So, the installation of probe depend on conditions and structure of working place. The more installation correctly, the more effective of moisture probe.*

[www.omi.co.th](http://www.omi.co.th)

**Omega Measuring Instrument Co., Ltd.**

Tel : 02-105-4676

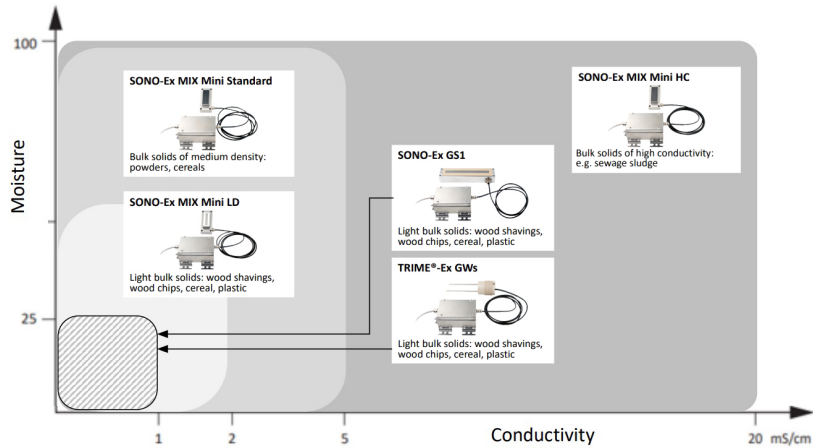
Fax : 02-903-0080 ext. 6867

Email : [info@omi.co.th](mailto:info@omi.co.th)

Line : @omith

## SONO SENSOR APPLICATION

Depending on the group, SONO sensors differ in resolution and measuring range. The higher the conductivity range of a sensor, the lower the resolution or the performance characteristics. Use the following diagram to help you choose sensor.



### Ordering code

**SONO - EX - MIX Mini -**

**LD : Low density version**  
 Moisture 0...50% water  
 Conductivity 0...2 mS/cm



**- : Standard version**  
 Moisture 0...100% water,  
 Conductivity 0...5 mS/cm



**HC : High electrical conductivity**  
 Moisture 0...100% water,  
 Conductivity 0...20 mS/cm



**Example :** SONO-EX-MIX Mini-HC

Moisture probe sensor high electrical conductivity version, moisture range 0...100% water, material's conductivity 0...20 mS/cm, Cer. II 2 D Ex tb IIIC T75°C Db

## ACCESSORIES for SONO-EX-MIX Mini

These are necessary equipments that using with products and increase efficiency.

**SM-USB** : SM-USB is the signal transmitter. it can connect your SONO probes with a PC and setting, adjustment, calibration by SONO-CONFIG software.



**Sensor cable**  : The connection cables with MIL connectors are available in cable lengths.

**308029** : Cable length of 4 meters

**308032** : Cable length of 10 meters

**308033** : Cable length of 25 meters



**SONO-VIEW** : SONO-View is a display and configuration for advanced process control with TRIME and SONO probes. Up to 4 probes can be connected via serial interface for displaying the measured values, setting of operation mode, calibration curves and other functions.



**SONO-CONFIG** : SONO-CONFIG it is possible to make process-related adjustments of individual parameters of the SONO probe. Furthermore the measurement values of the SONO probe can be read from the probe via the serial interface and displayed on the screen.

